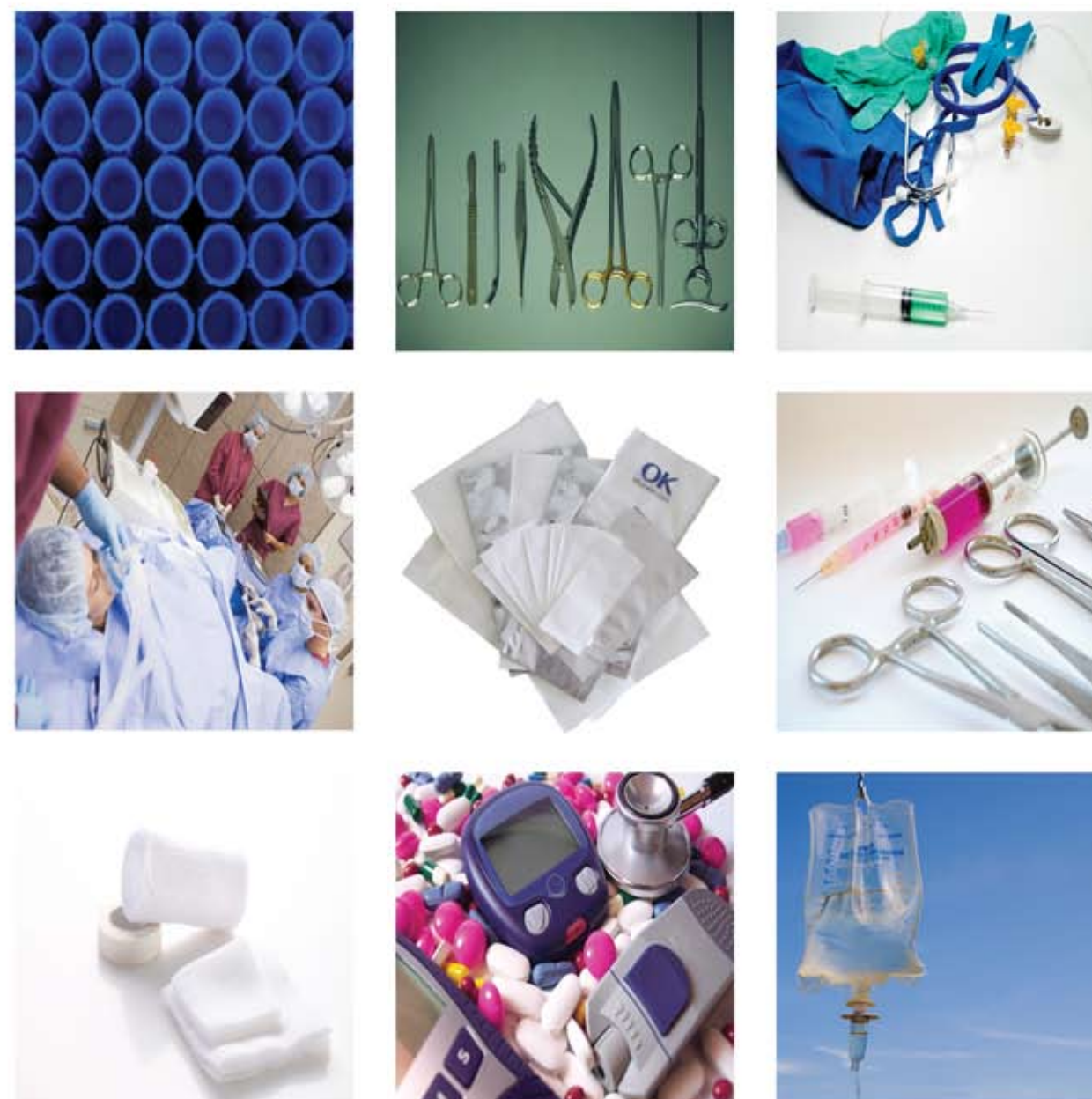


SUPERSEALER MBS

VALIDATABLE CONTINUOUS BAND SEALER USED FOR ALL MEDICAL BAG/POUCH SEALING APPLICATIONS.



TECHNICAL SPECIFICATIONS SUPERSEALER MBS

Stainless Steel Finish:	Clean and durable.
Bag/Pouch Material :	Heat seal up to 40 mils.
Speed:	Up to 60 ft./min or 18 mt/min belt speed. Other speeds upon request.
Seal Width:	7/16" (11mm) Optional 3/4" (19.05mm)
Heat Bars	One pair (1) 7" (17.78cm.)
Cooling Bars	One pair (1) 5" (12.7cm.)
Machine Handing:	Right to Left or Left to Right.
Power Requirements:	110 VAC, 1 Ph, 60 Hz, 10 Amp. 220 VAC, 1 Ph, 50 Hz, 7 Amp. CE marked.
Pneumatic:	80-100 psi clean dry air.
PLC Control:	Touch screen.

FEATURES

BENEFITS

Band Sealing Technology.	Can seal multiple materials consistently, because band supports pouch/bag material through sealing process.
Variable Speed.	Ease of matching conveyor speed for flexibility.
Closed Loop Temperature Control.	Accurate and consistent sealing temperature.
Touch Panel Monitor.	Operators, managers, QC personnel can always see all variables of the machine at all times both set and actual.
Recipes in PLC.	Pouch/bag change over made easy with menu and load up the next pouch/bag parameters with a touch of a button.
Easy Lift Cover.	No tool, band change with easy access.
Motorized Pedestal.	With a touch of a button, for height adjustments, simplifying multiple pouch/bag size applications.
Plugs into any Wall Plug.	Minimal utility requirements.
Broken Band Sensor.	No pouch/bag will be sealed out of its parameter settings, when it senses a broken band it will run in reverse.
Out of PLC Parameter Setting.	No pouch/bag will be sealed out of its parameter settings, when it senses a broken band it will run in reverse.
Wrinkles in Pouch/Bag Sensor.	Wrinkle detector.
IQ/OQ Sample Documents.	Information for the small to mid size companies that may require an introductory guideline.
Ethernet Port.	Optional, extraction of data.
Packaging of Terminally Sterilized Medical Devices.	Meeting: ANSI/AAMI/ASTM and ISO 11607-2/ISO 13485/ISO 9001 and EN 868 standards

SUPERSEALER MBS OPTIONS

FEATURES

BENEFITS

Bag/Pouch Top Trimmers.	Stationary blade and rotary blade trimmer meets all application requirements.
Bag/Pouch Trim Remover.	Standard trim remover can remove up to 3" of trim; other lengths of trim can be accommodated.
Conveyors.	OK International is a fabrication company. We have 6" wide 8' foot conveyors on the shelf. All other conveyors custom built to meet application.
Bag/Pouch Date/Lot Coders.	Emboss coder with up to 42 characters per line and ink wheel coder with up to 32 characters per line both provide up to two lines of code. All coders on market can be mounted and/or integrated with Supersealer.
Bag/Pouch fillers and Loaders.	OK International works with its partners who manufacturer scales, augers, robotics and automatic bag loaders to create a seamless packing line.
Bags/Pouches.	OK International can introduce you to the best bag/pouch manufacturers your application requires.
Data Reporting Software.	Creates a report that displays parameters of recipe used during session, stats such as average and Standard deviation of the process variables and also a listing of out of tolerance sampling points.
UDI Coder	Meets FDA Compliance Dates and GS1 Initiative.

CONTACT US

OK International Europe Ltd.
OK House
Shepherds Grove Industrial Estate West
Stanton, Suffolk, IP 31 2AR
England
44 -1359 -250705
44 - 1359 - 250165
sales@okiuk.com

OK International Corporation
73 Bartlett Street
Marlborough, MA 01752
USA
1-508-303-8286
1-508-303-8207
sales@oksealer.com
akellett@okcorp.com





Supersealer MBS Medical Band Sealer

The Supersealer MBS is a validatable continuous band sealer. This reliable, highly accurate machine can be used for all medical bag/pouch sealing applications.

Heat, Cooling Bars and Seal Wheels

- Thermocouples for each bar that continually feed information back to PLC.
- Wrinkle sensor rejecting any bag/pouch if defective seal.
- Pneumatics on seal wheel pressure.
- Calibration, heat and pressure variables have external ports for ease of calibration or monitoring.

Operator/Interface PLC

- Recipes for each bag/pouch parameters loaded in.
- Parameters determined from validation protocol are displayed on touch screen.
- Real time parameters also displayed at all times.
- Out of parameter issues are displayed on touch screen for ease of troubleshooting.
- Sealer runs in reverse or alarms if any issues arise and it will not run until issues resolved. There will NEVER be bag/pouch sealed out of its parameters.

Medical applications where you will find the Supersealer MBS running in:

- Surgery & Test Kits.
- Syringes, Surgical Blades.
- Bandages & Band Aids.
- Medical Kits.
- Medical Tubing.
- Medical Gowns.
- Medical Devices



Supersealer MBS with Thermal Ink Jet Coder

Sanitary Construction

- The main frame components are constructed of Stainless Steel and aluminum anodized plates. Interior components are manufactured in a combinations of these metals, Brass, Anodized Aluminum and Stainless Steel. The durability of these materials allows the Supersealer MBS to meet the demanding requirements of sanitary and sterile applications.

Features

- If information is out of parameter settings, machine runs in reverse.
- Calibration made easy with external ports.
- External programming port and 115 volt plug outlet.
- Never a bag/pouch sealed out of its validated parameter settings.
- Sensors for broken bands.
- Sensors for wrinkles in seal.
- Motorized pedestal, simple height changes.



Thermal ink jet coder to meet FDA compliance dates

Quality. Accuracy. Repeatability.

Installation Qualification (IQ)

- The Supersealer MBS order includes one day FAT at our facility in Marlborough, MA.
- FAT without customer covers functionality of Supersealer MBS. FAT with customer will cover customer's documentation requirements.

Operational Qualifications (OQ)

- Documentation sheets for parameter settings or use of customer sheets.
- Peel Tester available to validate seal strength.

Performance Qualifications (PQ)

- External ports for temperature and air pressure verification.
- Customer can perform random checks without stopping machine.
- The Supersealer MBS has a touchscreen displaying all variables, their set points, and real time data.
- Machine goes out of its parameters, machine runs in reverse and trouble area is displayed on touchscreen until resolved.

Precision Control For A Repeatable Process

The Supersealer MBS was designed to meet the tough standards that the medical industry demands. We have created a Medical Sealer to give the customer not only the highest quality of components but one that is easy to use. A simple process enables the customer to write a protocol that is uncomplicated and straight forward for ease of validation. Ease of validation makes it faster to meet industry compliance requirements and get their product out to their customers. All variables are visual at all times on the touchscreen both set and actual. Any deviation from validated parameters cause the sealer to run in reverse, the touchscreen displays trouble spot. An external port is provided with a 110 Volt outlet and a PLC programming port. The Supersealer MBS creative design can meet all customers requirements from ANSI/AAMI/ASTM/ISO 11607-2/ISO 13485/ISO 9001 and EN 868.



Now specializing
in UDI coders to
meet FDA
compliance dates.

The Supersealer MBS
meets all ISO 11607-2/
ISO 13485/ ISO 9001
and EN 868 requirements
for the packaging of
terminally sterilized
medical devices.